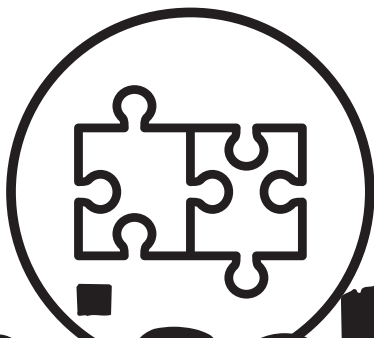
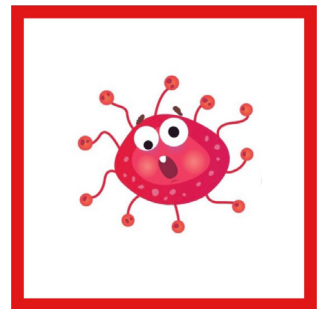
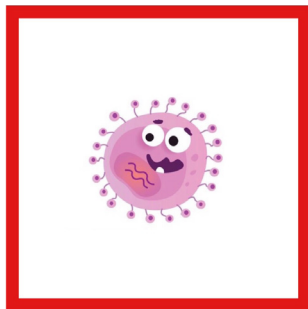
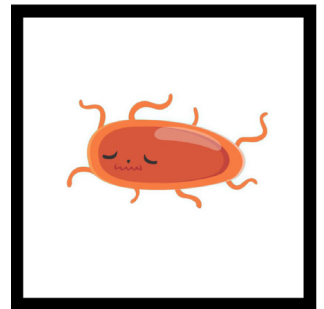
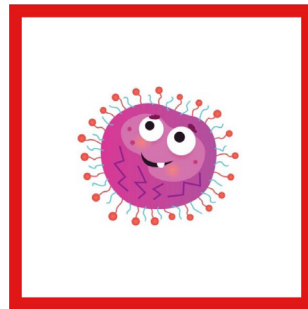
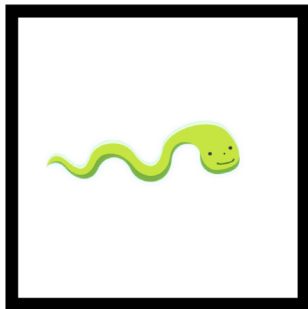
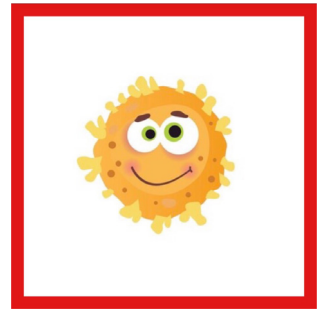
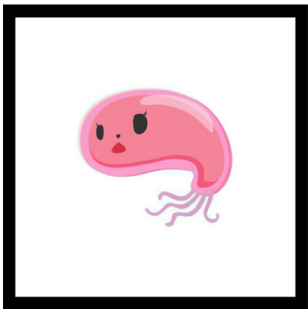


# Memory Batteri e Virus

Impariamo a riconoscere batteri e virus con il gioco del memory!

Le tessere che rappresentano le forme virali sono bordate di rosso, quelle che rappresentano le forme batteriche sono bordate di nero. Stampa due copie di questa pagina, ritaglia le immagini e incollale su cartoncini di uguale dimensione. Disponile coperte sul tavolo e scoprine solo due per volta cercando le coppie. Buon divertimento!



**giochi**

**SCIENZESTATE**  
2020

[www.openlab.unifi.it](http://www.openlab.unifi.it)  
OpenLab\_Firenze

#scienzestate